

METROLOGY®

Image Measuring Instrument

*EASILY
QUICKLY
ACCURATELY*



Innovation Design R&D
Patented Technology Award

*SAVE
Time & Cost
Improve the efficiency & accuracy*

Image Measuring Instrument



- **METROLOGY®** All new Image Measuring Instrument Top Series come with new innovative design in structural quality, functionality, and accuracy, a total upgrade to satisfy your upmost demand.
- IMI-TOP series, The whole machine granite structure design, better performance, longer life, a new generation of humanized measurement software, stronger functions and higher precision, precision optical measuring instruments made with the combination of precision mechanics, electronics, and optical measuring systems.
- Best suitable for precision manufacturing industries such as the following: Molding, machining parts, tools, screws, gears, automobiles, watches, machines, aerospace parts, semi-conductor, rubber, plastic, auto lathe machining, precision spring, and etc.
- IMI-TOP series is great for design & development, QC inspections, and educational purpose in schools.
- IMI-TOP series is design specifically to measure length, angles, radius, points, line, circle, distance, and other 2D/3D geometric element measuring requirements. Magnified projection image for inspection and comparison of the workpiece contour and surface shape.
- IMI-TOP series machine structure are made with combination of precision granite parts, linear or roller bearings slide, high precision linear scale, high resolution lens, color camera, image measuring software. The exceptional quality is your number 1 choice for workshop inspection and QC department examination.

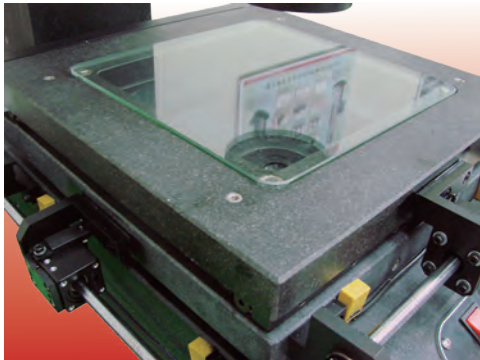




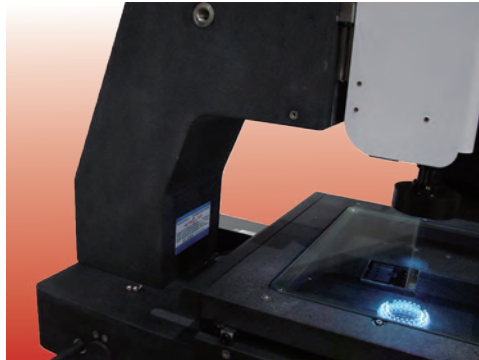
Innovation Design R&D
Patented Technology Award

■ Hardware Structure Description

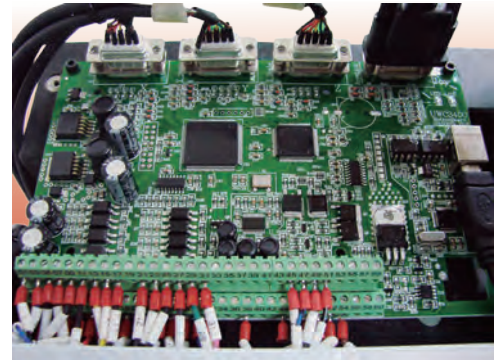
TOP Series *Unbeatable precision combination*



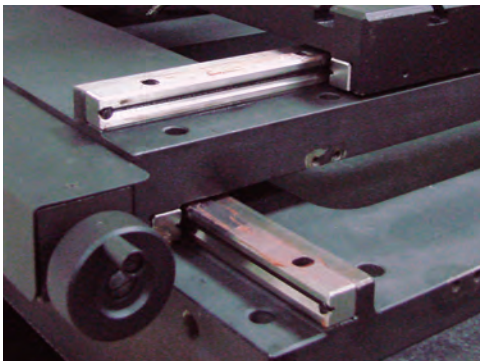
XY-axis granite table & base



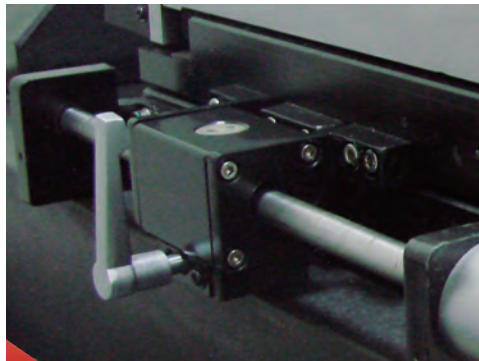
Arm-type granite Z-axis column



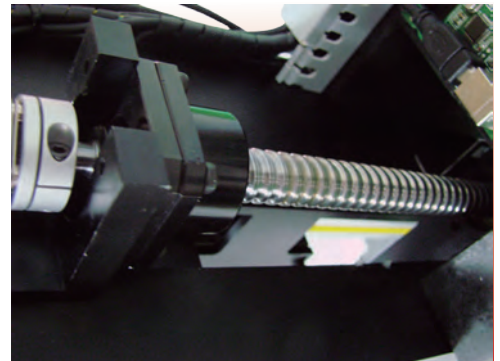
Integrated motion control card



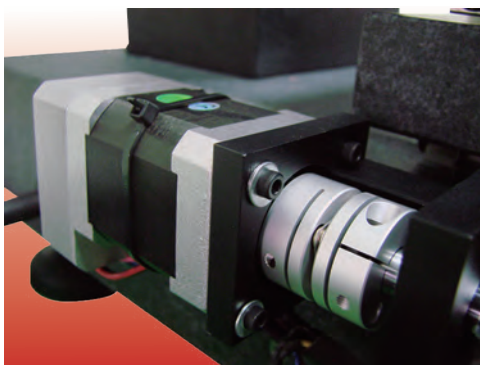
Precision linear roller guide



Non-threaded screw fastener



Precision ball screw drive



Smart control servo motor



Low friction and noiseless energy chain



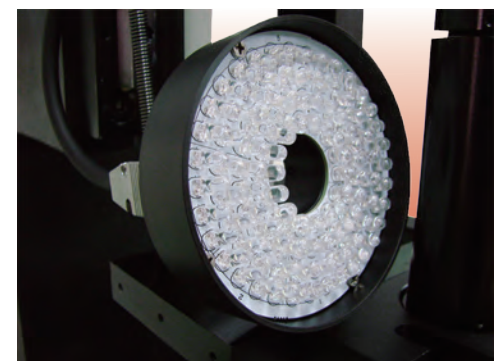
High precision linear scale



Zoom magnification optical lens
and 3D touch probe



Gigabit network million pixel color
industrial camera



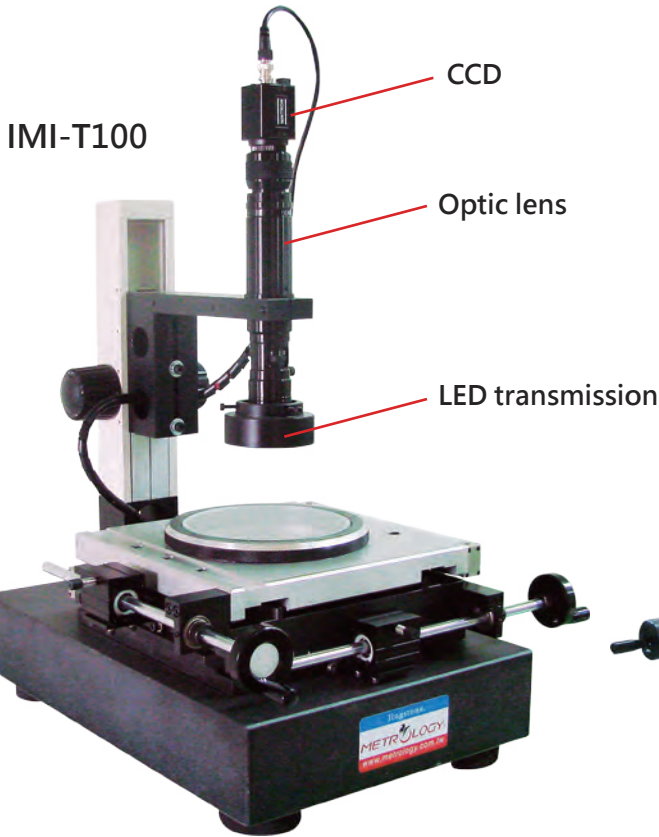
Programmable surface light source
with four rings and eight sections

■ Image Measuring Instrument

IMI-T Series (Economic)



Innovation Design R&D
Patented Technology Award



Model No.	Measuring Range (XY)
IMI-T100	100*100mm
IMI-T200	200*100mm

Technical specification

Resolution : 0.001mm/0.00005" (X-Y axis high accuracy linear scale)

Measuring Accuracy : $\pm(3+L/200)$ μm (X, Y Axis)

Main structure: Granite base, 2D measurement software, 360° rotating table (IMI-T100)
Metal base & body, 2D measurement software (IMI-T200)

Transmission system: 2-axis cross linear ball slide and toothless screw drive module

Image system: 1/3" 0.41M pixels high resolution CCD color camera

Image magnification: 25X-250X, Z-axis adjustable focusing distance 90mm

Focusing device: Z-axis manual transmission module handwheel, 75mm adjustment of focus

Optical system: 0.7-4.5X continuous zoom ultra-low distortion optic lens.

Illumination system: High brightness adjustable LED surface and transmission parallel light

Computer system: Computer with 21.5" LCD color monitor, keyboard, mouse

Software system: Jingstone Metrology 2.5D image measuring system.

Measuring result output: Word, Excel, TXT, DXF, SPC

Standard Accessories: calibration plate, measurement software, dongle, operation manual

■ Image Measuring Instrument

IMI-P Series (Practical)



Innovation Design R&D
Patented Technology Award

Model No.	Measuring Range (XYZ)
IMI-P200	200*100*150mm
IMI-P300	300*200*150mm
IMI-P400	400*300*200mm
IMI-P500	500*400*200mm

*Z axis height can be customized according to requirements



Technical specification

Resolution : 0.001mm/0.00005" (X-Y-Z axis high accuracy linear scale)

Measuring Accuracy : $\pm(3+L/200)$ μ m (X, Y Axis)

Main structure: XY-axis DIN 00 grade granite measuring table & Z axis arm type granite column

Transmission system: 3-axis cross linear ball slide and toothless screw drive module

Image system: 1/3" 0.41M pixels high resolution CCD color camera

Image magnification: 25X-250X

Focusing device: Z-axis transmission module handwheel, manual adjustment of image focus

Optical system: 0.7-4.5X continuous zoom ultra-low distortion optic lens.

Illumination system: High brightness adjustable LED surface and transmission parallel light

Computer system: Computer with 21.5" LCD color monitor, keyboard, mouse

Software system: Jingstone Metrology 2.5D image measuring system.

Measuring result output: Word, Excel, TXT, DXF, SPC

Standard Accessories: calibration plate, measurement software, dongle, operation manual

Optional Accessories: Steel instrument working table cover with OA desktop

■ Image Measuring Instrument

IMI-AF Series (Autofocus)



Innovation Design R&D
Patented Technology Award



Model No.	Measuring Range (XYZ)
IMI-AF200	200*100*150mm
IMI-AF300	300*200*150mm
IMI-AF400	400*300*200mm
IMI-AF500	500*400*200mm

*Z axis height can be customized according to requirements



Z-axis Controller

Technical specification

- Resolution : 0.001mm/0.00005" (X-Y-Z axis high accuracy linear scale)
- Measuring Accuracy : $\pm(3+L/200)$ μm (X, Y Axis)
- Main structure: XY-axis DIN 00 grade granite measuring table & Z axis arm type granite column
- Transmission system: 3-axis cross linear ball slide and toothless screw drive module
- Electronic system: Z-axis AC servo motor speed control system and controller**
- Image system: 1/3" 0.41M pixels high resolution CCD color camera
- Image magnification: 25X-250X
- Focus system: Z axis electric motor & software autofocus system**
- Optical system: 0.7-4.5X continuous zoom ultra-low distortion optic lens.
- Illumination system: High brightness adjustable LED surface and transmission parallel light
- Computer system: Computer with 21.5" LCD color monitor, keyboard, mouse
- Software system: Jingstone Metrology 2.5D image measuring system.
- Measuring result output: Word, Excel, TXT, DXF, SPC
- Standard Accessories: calibration plate, measurement software, dongle, operation manual
- Optional Accessories: Steel instrument working table cover with OA desktop

■ Image Measuring Instrument

IMI-AF-P Series (Autofocus+Probe)



Innovation Design R&D
Patented Technology Award



3D touch probe



Model No.	Measuring Range (XYZ)
IMI-AF200P	200*100*150mm
IMI-AF300P	300*200*150mm
IMI-AF400P	400*300*200mm
IMI-AF500P	500*400*200mm

*Z axis height can be customized according to requirements



Z-axis Controller

Technical specification

Resolution : 0.001mm/0.00005" (X-Y-Z axis high accuracy linear scale)

Measuring Accuracy : $\pm(3+L/200)$ μ m (X, Y Axis)

Main structure: XY-axis DIN 00 grade granite measuring table & Z axis arm type granite column

Transmission system: 3-axis cross linear ball slide and toothless screw drive module

Electronic system: Z-axis AC servo motor speed control system and controller

Image system: 1/3" 0.41M pixels high resolution CCD color camera

Image magnification: 25X-250X

Focus system: Z axis electric motor & software autofocus system

Optical system: 0.7-4.5X continuous zoom ultra-low distortion optic lens.

Illumination system: High brightness adjustable LED surface and transmission parallel light

Probe system: Renishaw (U.K.) MCP touch trigger probe, setting ring and ruby tips.

Computer system: Computer with 21.5" LCD color monitor, keyboard, mouse

Software system: Jingstone Metrology 2.5D/3D image & probe coaxial measuring system.

Measuring result output: Word, Excel, TXT, DXF, SPC

Standard Accessories: calibration plate, measurement software, dongle, operation manual

Optional Accessories: Steel instrument working table cover with OA desktop

■ Image Measuring Instrument

IMI-CNC Series (CNC-Automatic)



Innovation Design R&D
Patented Technology Award

Model No.	Measuring Range (XYZ)
IMI-CNC200	200*200*150mm
IMI-CNC300	300*200*150mm
IMI-CNC400	400*300*200mm
IMI-CNC500	500*400*200mm

*Z axis height can be customized according to requirements



3-axis joystick controller

Technical specification

Resolution : 0.0005mm/0.00002" (X-Y-Z axis high accuracy linear scale)

Measuring Accuracy : $\pm(2.5+L/200)$ μ m (X, Y Axis)

Main structure: XY-axis DIN 00 grade granite measuring table & Z axis arm type granite column

Transmission system: 3-axis cross linear ball slide and toothless screw or ball screw drive module

Control system: CNC automatic editing program measurement and 3-axis joystick controller

Electronic system: 3-axis smart control servo motor and integrated motion control card

Image system: Gigabit network high resolution million pixel color industrial camera

Image magnification: 25X-250X

Optical system: 0.7-4.5X continuous zoom ultra-low distortion optic lens.

Focus system: Z axis electric motor & software autofocus system

Illumination system: Programmable surface light source with four rings and eight sections

Computer system: Quad core computer with 21.5" LCD color monitor, keyboard, mouse

Software system: Jingstone Metrology 2.5D CNC CAD graphic image measuring software.

Measuring result output: Word, Excel, TXT, DXF, SPC, IGES

Standard Accessories: calibration plate, measurement software, dongle, operation manual

Optional Accessories: Steel instrument working table cover with OA desktop

0.7-4.5X Autozoom optic lens

■ Image Measuring Instrument

IMI-CNC-P Series (CNC+Probe)



Innovation Design R&D
Patented Technology Award

Model No.	Measuring Range (XYZ)
IMI-CNC200P	200*200*150mm
IMI-CNC300P	300*200*150mm
IMI-CNC400P	400*300*200mm
IMI-CNC500P	500*400*200mm

*Z axis height can be customized according to requirements



3D touch probe



3-axis joystick controller

Technical specification

Resolution : 0.0005mm/0.00002" (X-Y-Z axis high accuracy linear scale)

Measuring Accuracy : $\pm(2.5+L/200)$ μm (X, Y Axis)

Main structure: XY-axis DIN 00 grade granite measuring table & Z axis arm type granite column

Transmission system: 3-axis cross linear ball slide and toothless screw or ball screw drive module

Control system: CNC automatic editing program measurement and 3-axis joystick controller

Electronic system: 3-axis smart control servo motor and integrated motion control card

Image system: Gigabit network high resolution million pixel color industrial camera

Image magnification: 25X-250X

Optical system: 0.7-4.5X continuous zoom ultra-low distortion optic lens.

Focus system: Z axis electric motor & software autofocus system

Illumination system: Programmable surface light source with four rings and eight sections

Probe system: Renishaw (U.K.) MCP touch trigger probe, setting ring and ruby tips.

Computer system: Quad core computer with 21.5" LCD color monitor, keyboard, mouse

Software system: Jingstone Metrology 2.5D CNC CAD graphic image measuring software.

& 3D image & probe coaxial measuring system.

Measuring result output: Word, Excel, TXT, DXF, SPC, IGES

Standard Accessories: calibration plate, measurement software, dongle, operation manual

Optional Accessories: Steel instrument working table cover with OA desktop

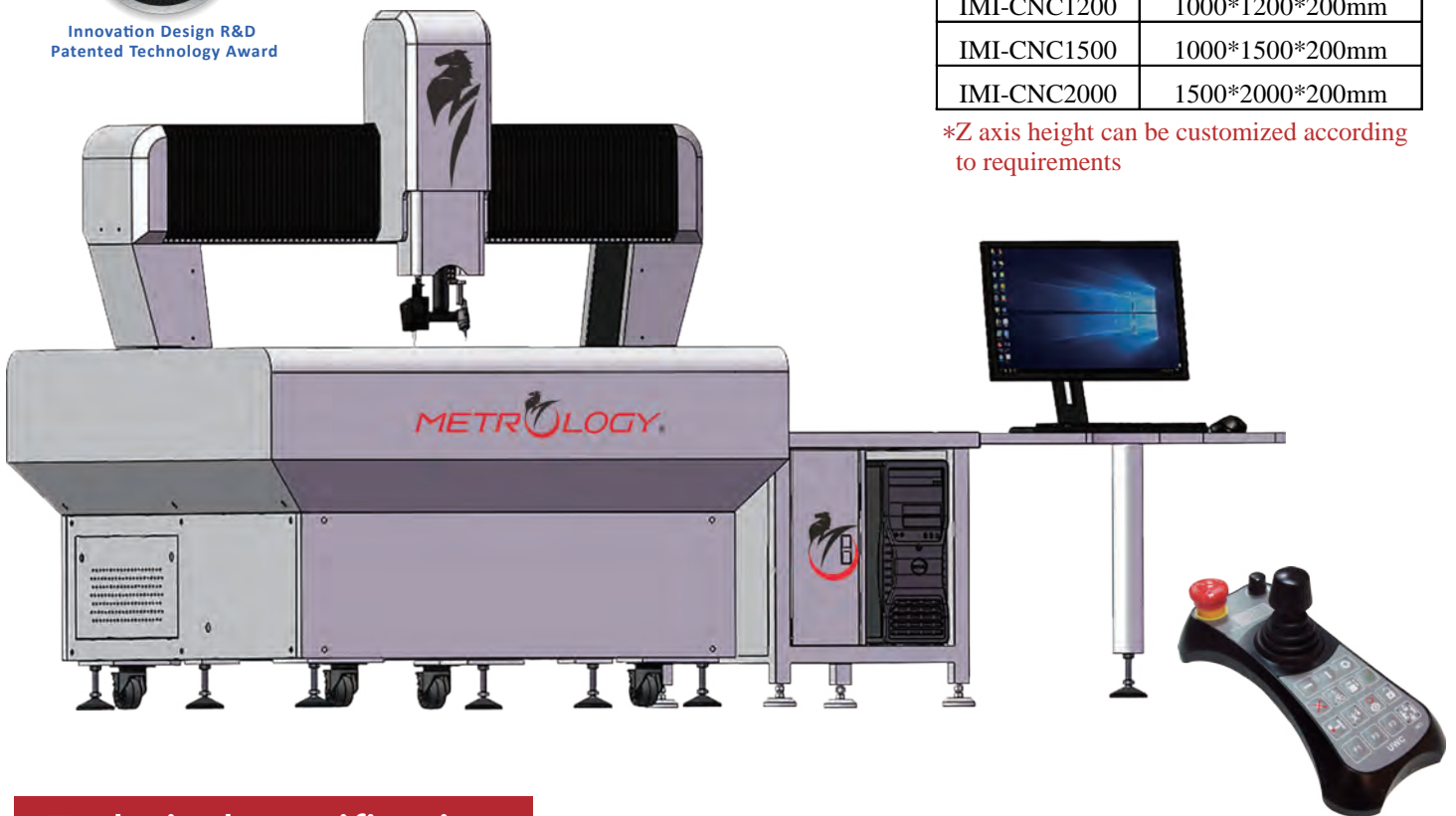
0.7-4.5X Autozoom optic lens

■ Image Measuring Instrument

IMI-CNC Series (CNC-Automatic)



Innovation Design R&D
Patented Technology Award



Bridge type

Model No.	Measuring Range (XYZ)
IMI-CNC600	600*500*200mm
IMI-CNC800	800*600*200mm
IMI-CNC1000	800*1000*200mm
IMI-CNC1200	1000*1200*200mm
IMI-CNC1500	1000*1500*200mm
IMI-CNC2000	1500*2000*200mm

*Z axis height can be customized according to requirements

Technical specification

3-axis joystick controller

Resolution : 0.0005mm/0.00002" (X-Y-Z axis high accuracy linear scale)

Measuring Accuracy : $\pm(3.5+L/200)$ μ m (X, Y Axis)

Main structure: DIN 00 grade XZ axis bridge type granite column & Y-axis measuring stand

Transmission system: 3-axis high precision linear slide & ball screw drive module

Control system: CNC automatic editing program measurement and 3-axis joystick controller

Electronic system: 3-axis smart control servo motor and integrated motion control card

Image system: Gigabit network high resolution million pixel color industrial camera

Image magnification: 25X-250X

Optical system: 0.7-4.5X continuous zoom ultra-low distortion optic lens.

Focus system: Z axis electric motor & software autofocus system

Illumination system: Programmable surface light source with four rings and eight sections

Computer system: Quad core computer with 21.5" LCD color monitor, keyboard, mouse

Software system: Jingstone Metrology 2.5D CNC CAD graphic image measuring software.

Measuring result output: Word, Excel, TXT, DXF, SPC, IGES

Standard Accessories: calibration plate, measurement software, dongle, operation manual

Optional Accessories: Steel instrument working table cover with OA desktop

0.7-4.5X Autozoom optic lens

■ Image Measuring Instrument

IMI-CNC-P Series (CNC+Probe)



Innovation Design R&D
Patented Technology Award

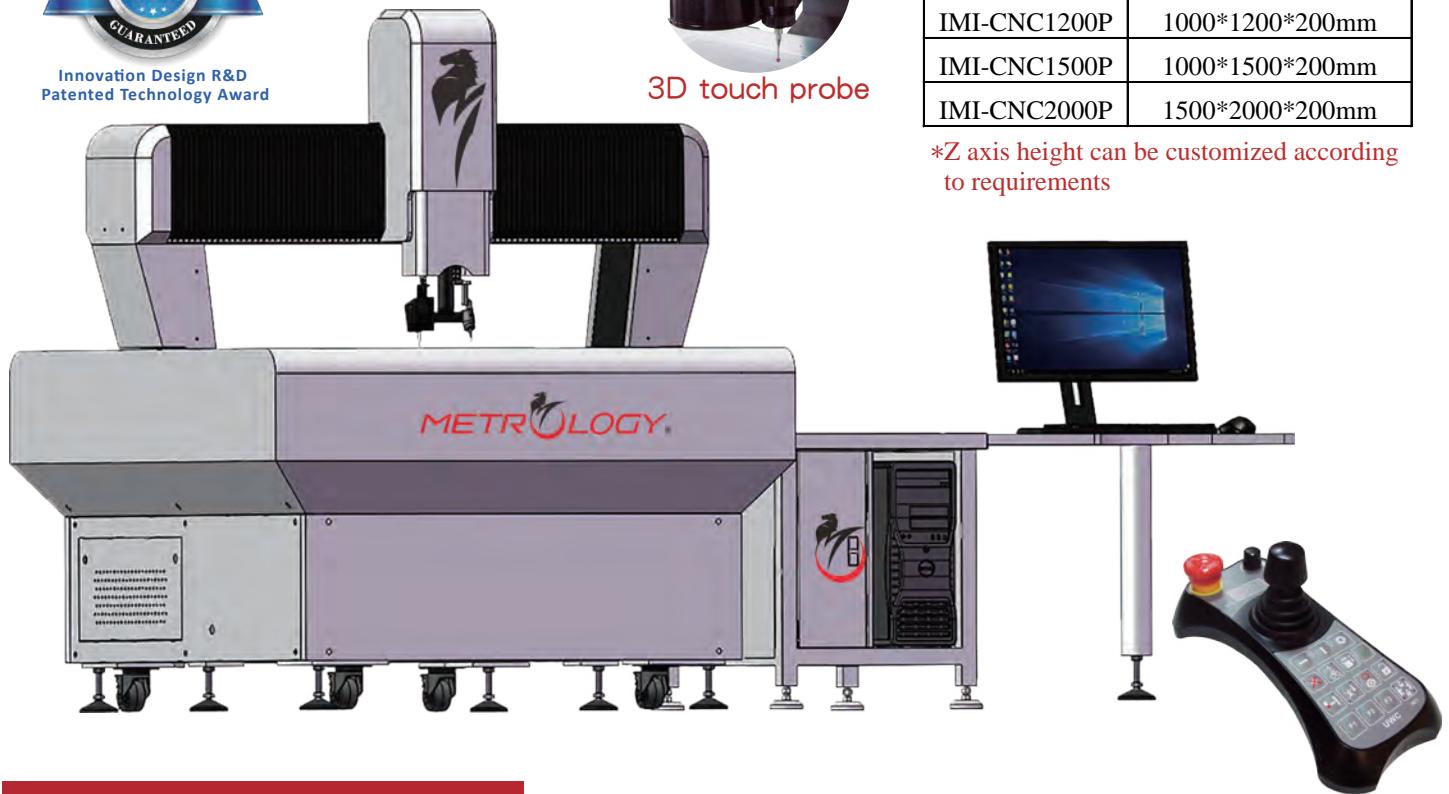


3D touch probe

Bridge type

Model No.	Measuring Range (XYZ)
IMI-CNC600P	600*500*200mm
IMI-CNC800P	800*600*200mm
IMI-CNC1000P	800*1000*200mm
IMI-CNC1200P	1000*1200*200mm
IMI-CNC1500P	1000*1500*200mm
IMI-CNC2000P	1500*2000*200mm

*Z axis height can be customized according to requirements



3-axis joystick controller

Technical specification

Resolution : 0.0005mm/0.00002" (X-Y-Z axis high accuracy linear scale)

Measuring Accuracy : $\pm(3.5+L/200)$ μm (X, Y Axis)

Main structure: DIN 00 grade XZ axis bridge type granite column & Y-axis measuring stand

Transmission system: 3-axis high precision linear slide & ball screw drive module

Control system: CNC automatic editing program measurement and 3-axis joystick controller

Electronic system: 3-axis smart control servo motor and integrated motion control card

Image system: Gigabit network high resolution million pixel color industrial camera

Image magnification: 25X-250X

Optical system: 0.7-4.5X continuous zoom ultra-low distortion optic lens.

Focus system: Z axis electric motor & software autofocus system

Illumination system: Programmable surface light source with four rings and eight sections

Probe system: Renishaw (U.K.) MCP touch trigger probe, setting ring and ruby tips.

Computer system: Quad core computer with 21.5" LCD color monitor, keyboard, mouse

**Software system: Jingstone Metrology 2.5D CNC CAD graphic image measuring software.
& 3D image & probe coaxial measuring system.**

Measuring result output: Word, Excel, TXT, DXF, SPC, IGES

Standard Accessories: calibration plate, measurement software, dongle, operation manual

Optional Accessories: Steel instrument working table cover with OA desktop

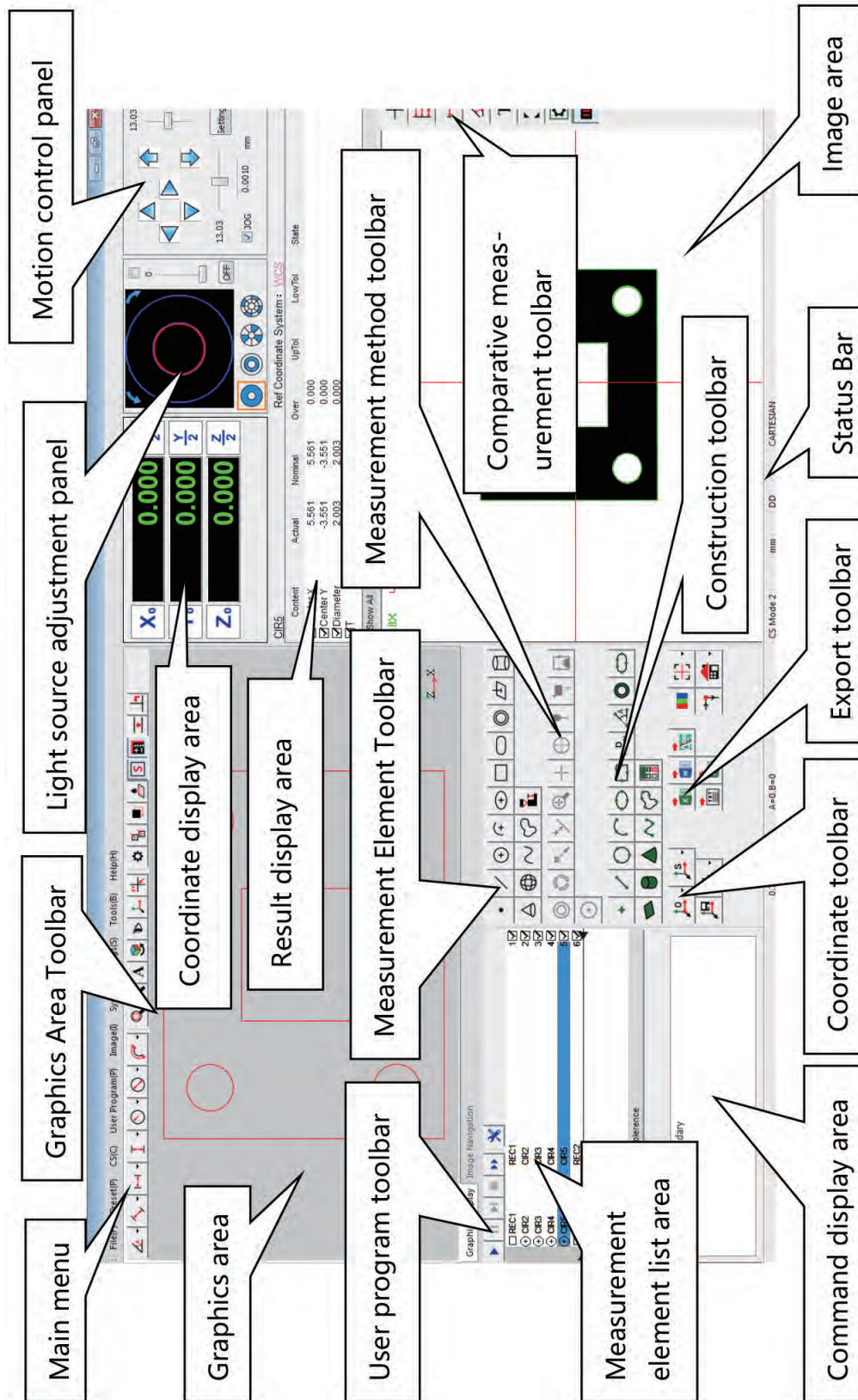
0.7-4.5X Autozoom optic lens



Innovation Design R&D
Patented Technology Award

- Introduction of measuring software for image measuring instrument

Jingstone metrology 2.5D/3D image measuring software





Innovation Design R&D
Patented Technology Award

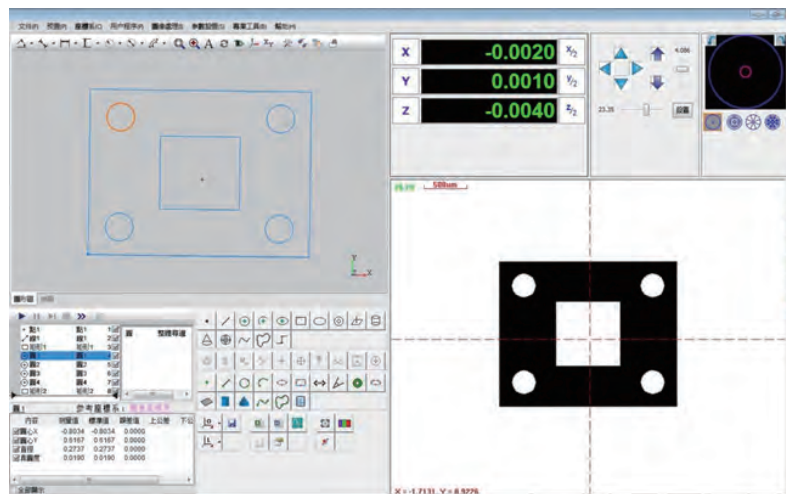
■ Introduction of measuring software for image measuring instrument

Jingstone metrology 2.5D/3D image measuring software

JINGSTONE METROLOGY 2.5D/3D image measurement software has a simple interface, intuitive operation, easy to use, and powerful functions. It can quickly and efficiently complete the measurement element requirements and accurate measurement results.

1 · Simple and friendly interface

Put the main and commonly used functions on the main interface, which is easy to be familiar with. The operator can complete almost all measurement actions by simply clicking and dragging the mouse.



2 · Powerful geometric measurement function

1. Complete geometric measurement function

Element measurement:

Elements include the point, line, circle, arc, ellipse, rectangle, slot, ring, open curve, closed curve and the other geometric elements.

When the Z-axis adds electronic probes or laser displacement sensors and other equipment, 3D graphic elements such as cylinders, cones, spheres, and surfaces in 3D space can also be measured.

According to the actual characteristics of the element, each element can be measured in a variety of different methods. After the point or edge finding measurement is completed, the coordinate value, length, area, volume and other information of the element can be directly obtained.

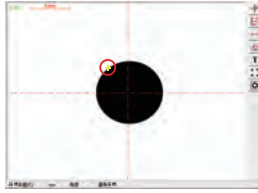




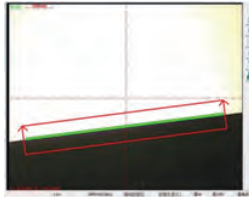
Innovation Design R&D Patented Technology Award

■ Introduction of measuring software for image measuring instrument

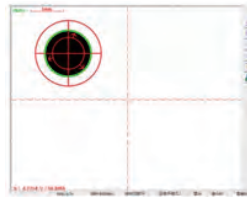
Measurement methods:



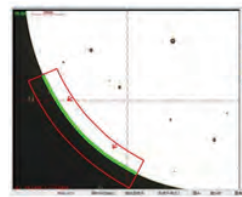
Extracting the closest point to the mouse cursor



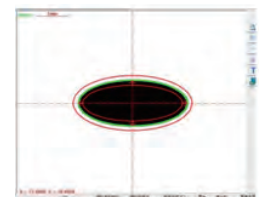
Extracting a straight line by capturing Multiple segments



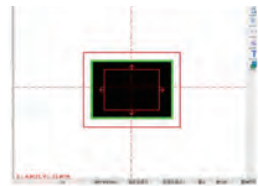
Extracting a circle by capturing the entire boudary



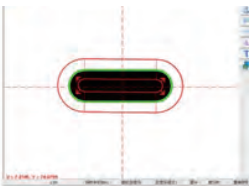
Extracting a circle by capturing Multiple segments



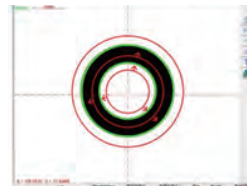
Extracting an ellipse by capturing the entire boudary



Extracting a rectangle by capturing the entire boudary



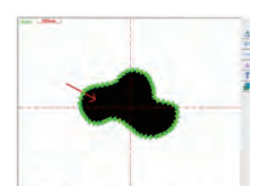
Extracting a slot by capturing the entire boudary



Extracting a ring by capturing the entire boudary



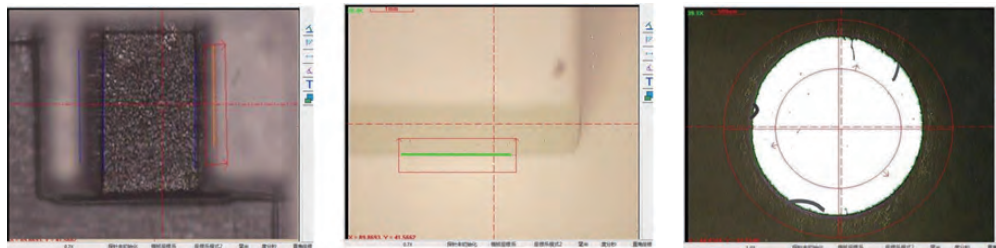
Measuring an open curve



Measuring a closed curve

2. Powerful edge finding function

It can capture the weak edges of the image, and can set the direction of edge finding arbitrarily to avoid edge finding errors, set edge finding parameters flexibly, and remove the influence of noise and burrs.

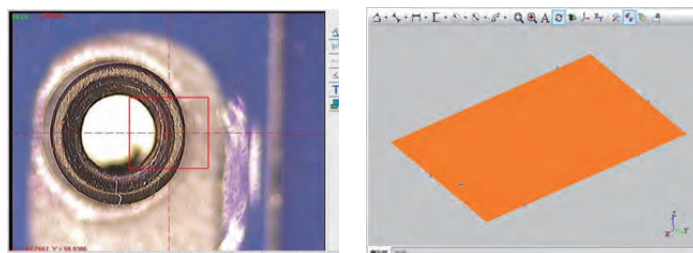


3. Image focus function

Manual focus: only need to move the Z-axis handwheel to adjust the focus, eye observation to determine the clearest state of the image

Autofocus: The Z-axis electronic motor speed control system, manipulator and software automatically determine the clearest state of the focused image

The above functions can be used to measure height, depth and flatness.



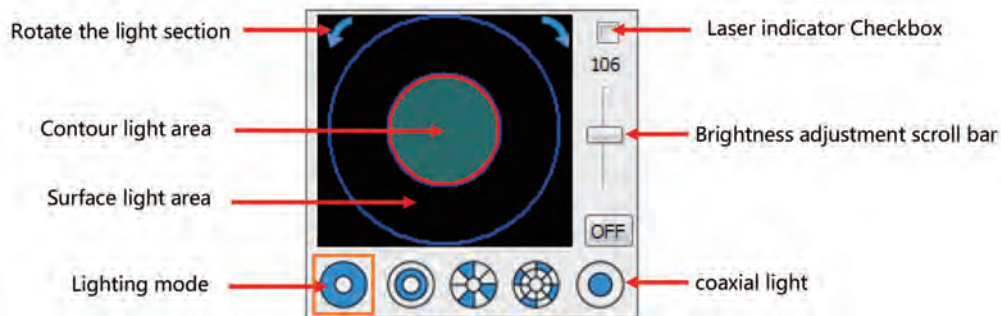


Innovation Design R&D
Patented Technology Award

■ Introduction of measuring software for image measuring instrument

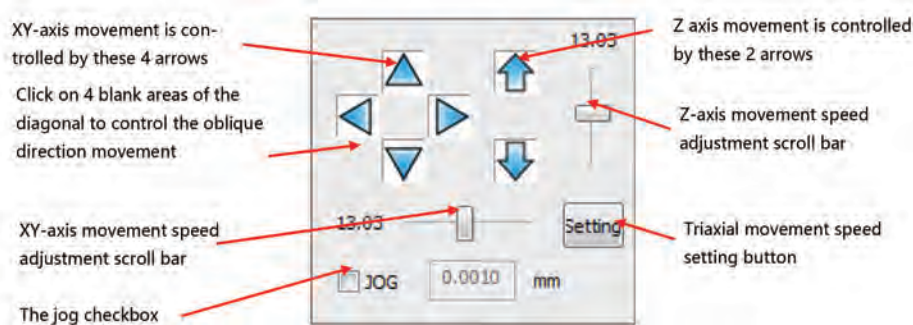
3 · Light source supporting various lighting modes

When the instrument is equipped with the corresponding light source to support various lighting modes, a variety of light source adjustment functions can be realized
The adjustment mode of light sources such as multi-ring and multi-segment surface light, contour parallel light, coaxial light, etc.



4 · Multifunctional motion control area (for CNC model)

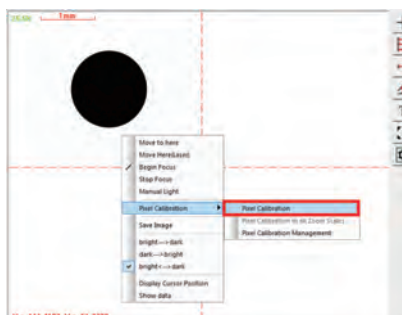
1. The measuring table can be moved by commands in the motion control area.



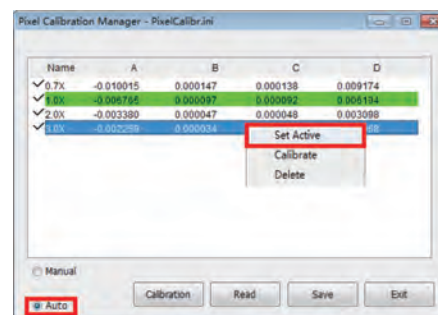
2. The way of motion control area: motion control 3-axis movement, image area XY axis movement in any direction, fixed coordinate point 3-axis distance movement, element center movement, jog coordinate axis movement, map navigation fast positioning movement

5 · Pixel calibration function

1. Definition: Pixel calibration refers to establishing the correspondence between the pixel size of the computer display and the actual size.
2. Pixel calibration type : Four circles calibration (Applicable to movable XY measuring table)
 - One circle calibration (Applicable to the worktable cannot be moved or does not contain an optical scale)



Pixel calibration



Pixel calibration management

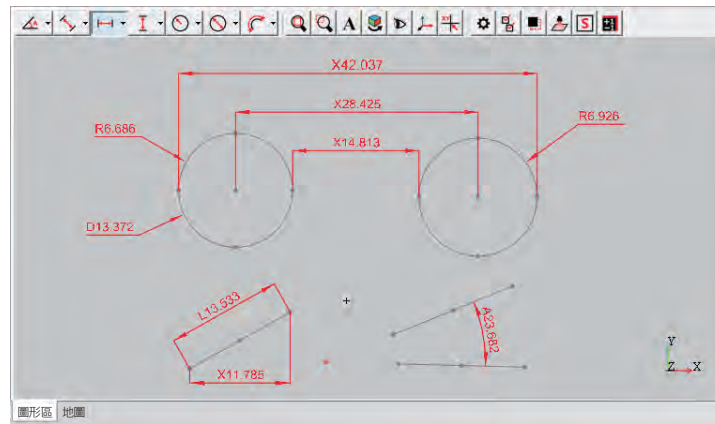


Innovation Design R&D
Patented Technology Award

■ Introduction of measuring software for image measuring instrument

6 · Dimensioning of graphic elements

Elements can be dimensioned, rotated, enlarged, and hidden in CAD mode through the graphics toolbar



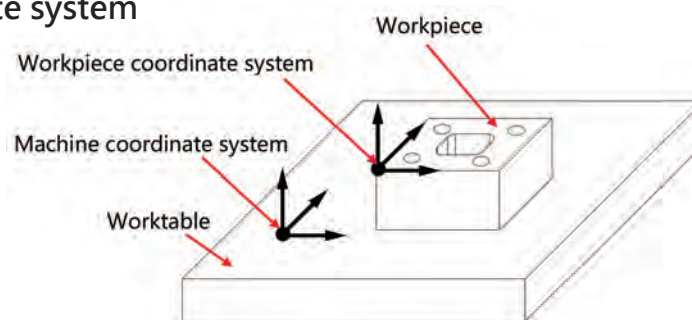
7 · Element construction and preset

Element construction : According to different elements, the construction methods includes extraction, intersecting, tangent, vertical, parallel, mirror, translation, composition, symmetry and so on.

Element Presetting : The software supports to preset the point, line, circle, plane, cylinder, cone, and sphere. Element preseting is also mainly used in some auxiliary measurements or comparative measurements.

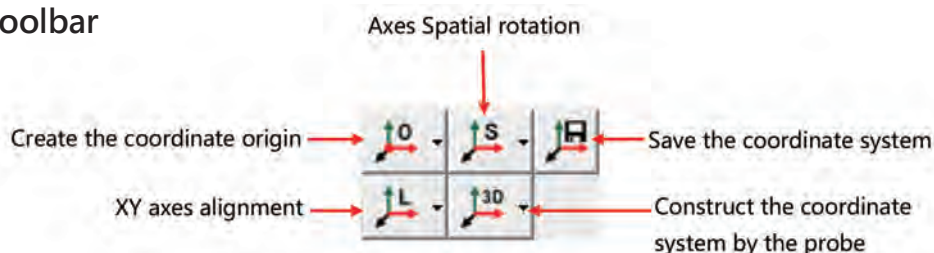
8 · Definition of the coordinate system

Use right-hand cartesian coordinates, divided into mechanical coordinate system and workpiece coordinate system



Creating coordinate system :

1. Establishing the machine coordinate system (Go Home)
2. Coordinate toolbar



3. Steps to create a workpiece coordinate system



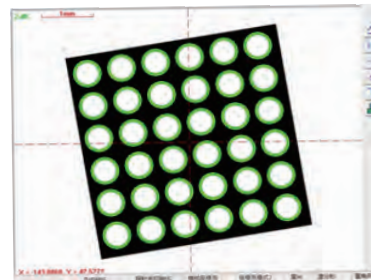
Innovation Design R&D
Patented Technology Award

■ Introduction of measuring software for image measuring instrument

9 · Measurement of complex shape workpieces and mass workpieces

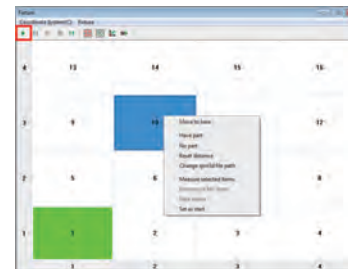
1. The elements translation and matrix

For feature elements arranged equidistantly, only one element needs to be measured, and the measurement of all elements can be automatically completed by the translation array function, which is very convenient to measure array features.



2. The fixture array and the macro array

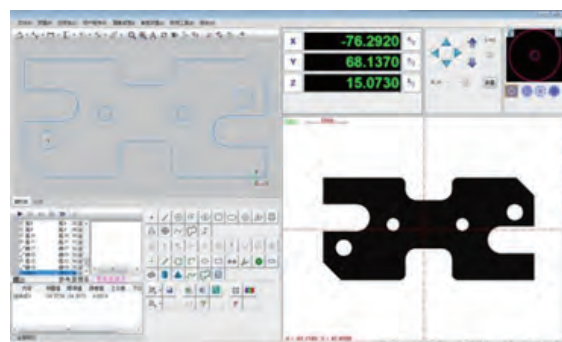
When measuring a large number of workpieces, you only need to measure one workpiece, and the workpiece array and array macro function can automatically complete the measurement of all workpieces. No matter a single fixture or multiple fixtures can handle it at the same time, it saves time and improves measurement efficiency.



3. Comparative measurement with the CAD drawing

CAD software can be used to draw dimensional drawings directly, and automatic measurement can be realized after importing the software, without the need to pick points to find edges, which is very convenient for coordinate measurement and contour comparison measurement of complex or irregular shapes.

CAD graphics display supports DXF format 2D file import and export and IGES format file export. CAD graphics output can be used for reverse engineering



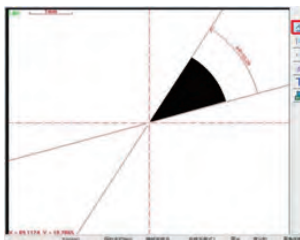


Innovation Design R&D
Patented Technology Award

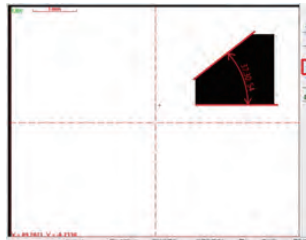
■ Introduction of measuring software for image measuring instrument

4. The comparative measurement toolbar

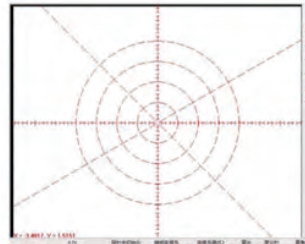
The scale line, angle line and standard circle can be preset to compare and measure the workpiece. You can also directly pull the dimension line or angle line on the image contour to dynamically observe the length, angle, step height, diameter and other dimensions of the workpiece.



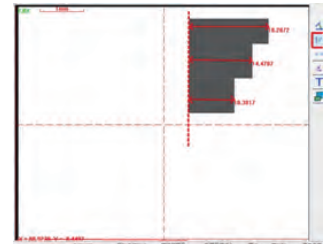
Quick angle observation



Measuring by drawing two angle lines



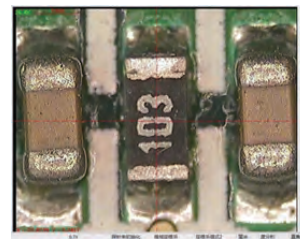
Other functions of the comparative measurement toolbar



Distance from a line to points

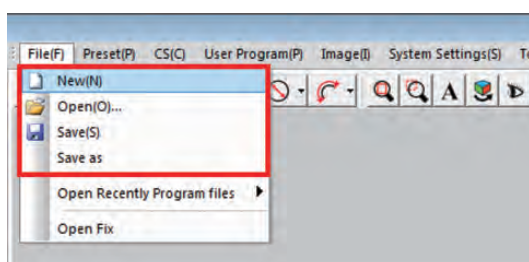
5. Map navigation function with quick positioning of local features

The software function can be used to control the machine to scan the entire workpiece into a picture, and even directly import the picture of the workpiece obtained by taking pictures, and use the picture element point as the unit to accurately locate the workpiece. This function enables the machine to quickly and automatically locate any subtle local position, which is especially suitable for the positioning of large-size workpieces and the precise positioning of workpieces with a large number of similar features.



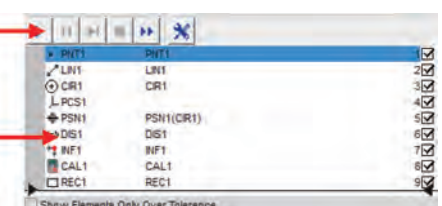
10 · Flexible user program

1. The software automatically compiles the user program according to the user's measurement step sequence and control the operation and stop of the program.
2. The user program and each step can be edited, sorted, pinched in, and deleted to adapt to various complex and changeable measurement steps.
3. When measuring a large number of workpieces, only one edge-finding measurement is required to avoid repeated actions and save time and effort.



Program Toolbar

Element list area





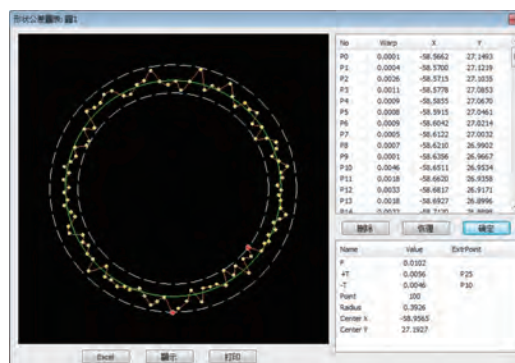
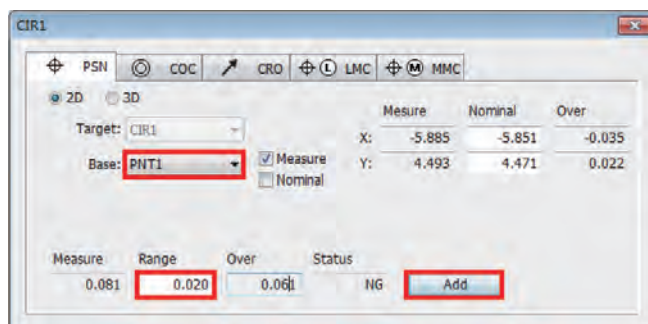
Innovation Design R&D
Patented Technology Award

Introduction of measuring software for image measuring instrument

11 · Automatic calculation of geometric tolerances of elements

1. The software provides complete tolerance setting and calculation functions, which can set and calculate geometric tolerances such as straightness, roundness, flatness, cylindricity, profile, position, parallelism, perpendicularity, concentricity, circular runout, etc. .
2. Click the element display area to view the measurement result data, including the measurement value, error value, upper tolerance, lower tolerance and status.
3. Tolerance can be set to automatically determine the status of the measurement result. When it is NG, it will be warned in red. Tolerance settings include upper and lower tolerances, shape tolerances, and position tolerances.
4. The visualized tolerance chart enables the user to know the specific out-of-tolerance position, which is convenient for finding out the reason.

CIR1		Ref Coordinate System : PCS1				
Content	Actual	Nominal	Over	UpTol	LowTol	State
<input checked="" type="checkbox"/> Center X	2.119	2.119	0.000			
<input checked="" type="checkbox"/> Center Y	-2.002	-2.002	0.000			
<input checked="" type="checkbox"/> Diameter	2.001	2.100	-0.099	0.020	-0.020	NG
<input checked="" type="checkbox"/> T	0.114	0.114	0.000			



12 · Data report and graphic data export function

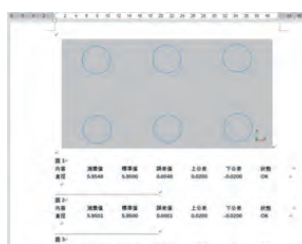
The software can export the result data in a variety of report formats, and can export the measurement result data to EXCEL, WORD, TXT, DXF, format reports, IGES file export and SPC statistical calculation analysis.

Item	Item Name	Actual	Nominal	Over	UpTol	LowTol	Status
31	零件1	5.95	5.95	0.00	5.92	5.95	OK
32	零件2	5.949	5.95	-0.001	5.949	5.95	NG
33	零件3	5.949	5.95	-0.001	5.949	5.95	NG
34	零件4	5.949	5.95	-0.001	5.949	5.95	NG
35	零件5	5.949	5.95	-0.001	5.949	5.95	NG
36	零件6	5.949	5.95	-0.001	5.949	5.95	NG
37	零件7	5.949	5.95	-0.001	5.949	5.95	NG
38	零件8	5.947	5.95	-0.003	5.947	5.95	NG
39	零件9	5.947	5.95	-0.003	5.947	5.95	NG
40	零件10	5.947	5.95	-0.003	5.947	5.95	NG

Export EXCEL report



EXCEL export settings



Export WORD report

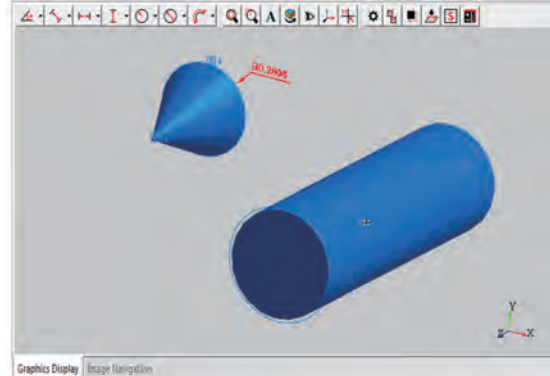
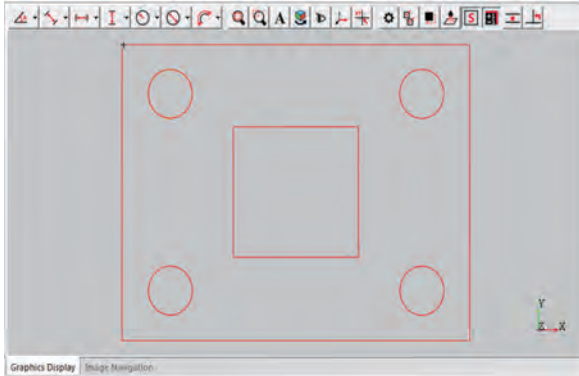
Item	Item Name	Actual	Nominal	Over	UpTol	LowTol	Status
31	零件1	5.95	5.95	0.00	5.92	5.95	OK
32	零件2	5.949	5.95	-0.001	5.949	5.95	NG
33	零件3	5.949	5.95	-0.001	5.949	5.95	NG
34	零件4	5.949	5.95	-0.001	5.949	5.95	NG
35	零件5	5.949	5.95	-0.001	5.949	5.95	NG
36	零件6	5.949	5.95	-0.001	5.949	5.95	NG
37	零件7	5.949	5.95	-0.001	5.949	5.95	NG
38	零件8	5.947	5.95	-0.003	5.947	5.95	NG
39	零件9	5.947	5.95	-0.003	5.947	5.95	NG
40	零件10	5.947	5.95	-0.003	5.947	5.95	NG

Export TXT report



Innovation Design R&D
Patented Technology Award

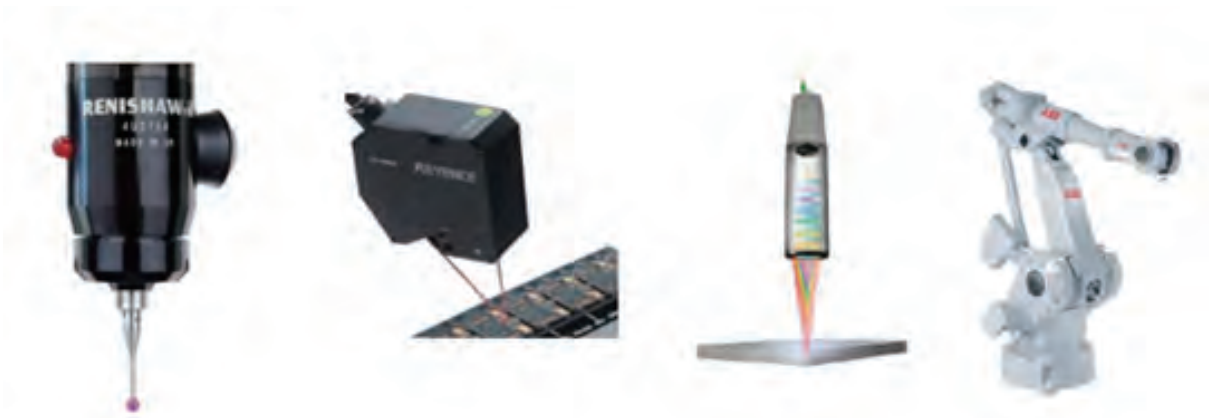
- Introduction of measuring software for image measuring instrument



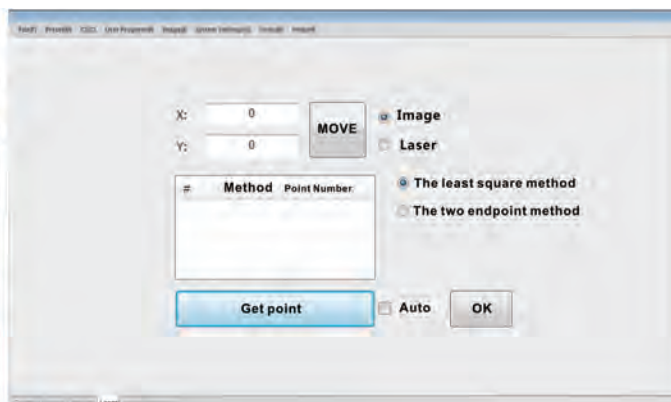
Can export DXF and IGES format graphics data, graphics can be directly used in CAD reverse engineering.

13 · Open peripheral connection function

The software supports connecting external devices such as probes, laser sensors, white light sensors, and manipulators, and can integrate these devices together to more accurately measure the height, depth and 3D size of the workpiece.



X ₀	-54.045	X/2
Y ₀	0.430	Y/2
Z ₀	51.306	Z/2
L ₀	+ 0.0079	



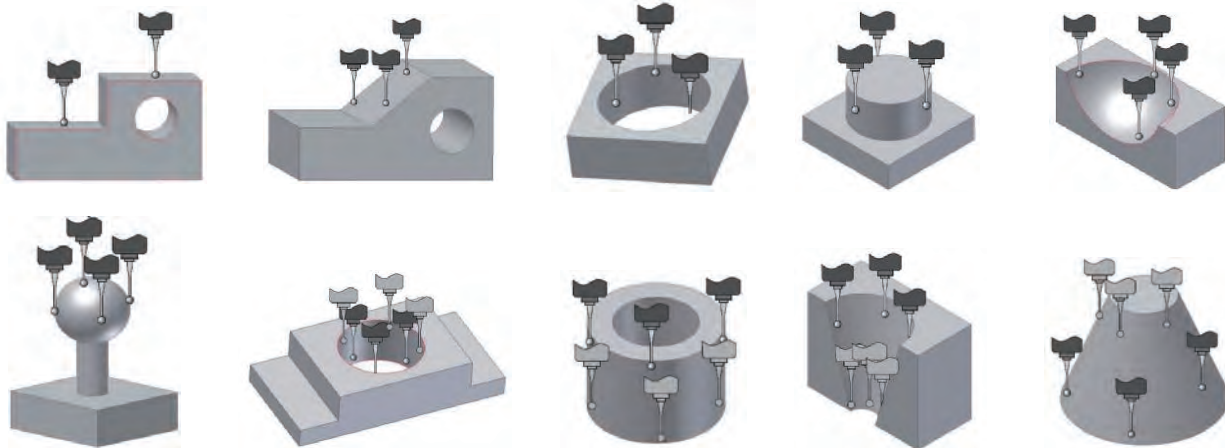


Innovation Design R&D
Patented Technology Award

■ Introduction of measuring software for image measuring instrument

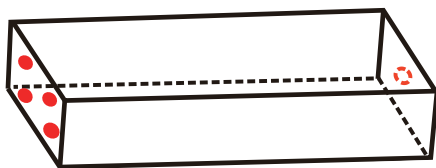
14 · 3D electronic probe measuring function

It can measure the 2D and 3D element features, such as the height, plane, cylinder, cone, ball, and ring. It supports 7 methods to build the 3D coordinate system, and also support the synchronization of the image measurement and the probe measurement.

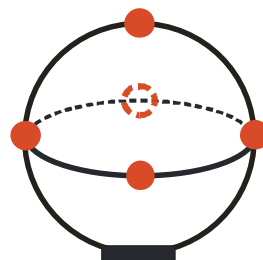


15 · Electronic probe styli calibration

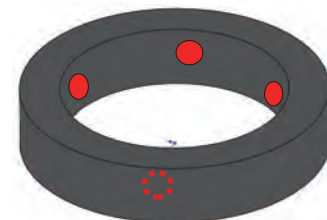
can use the standard block gauge, standard sphere, or standard ring to calibrate the probe system.



Collect planes and points



Collect around the sphere and vertices

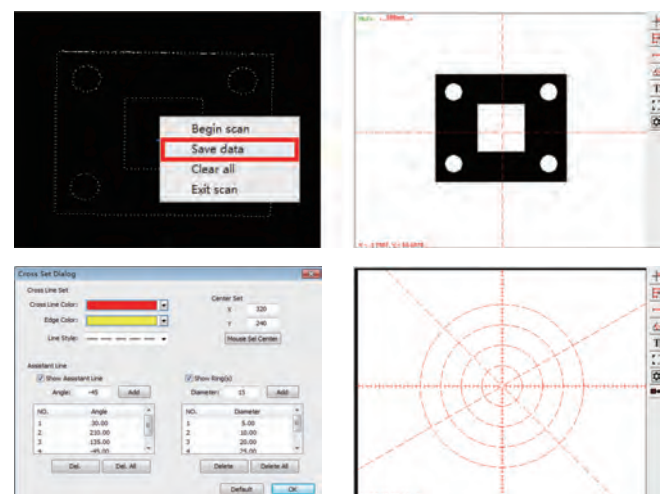


Collect the circumference

16 · Practical measurement functions

1. The elements translation and matrix
2. Comparative measurement with the CAD drawing
3. The fixture array and the macro array
4. The scanning function for reverse engineering
5. Comparative measurement with auxiliary lines and rings
6. The comparative measurement toolbar

*Please refer to the software operation manual for detailed function description of this measurement software



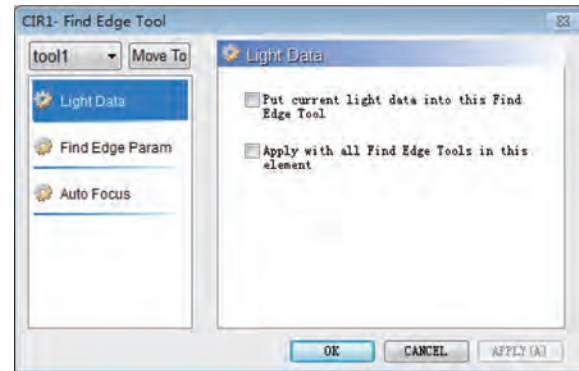
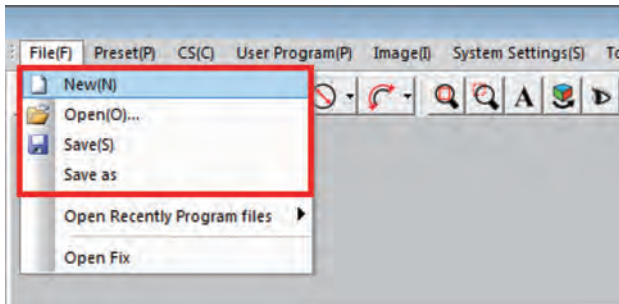


Innovation Design R&D
Patented Technology Award

■ Introduction of measuring software for image measuring instrument

17 · Other setting functions

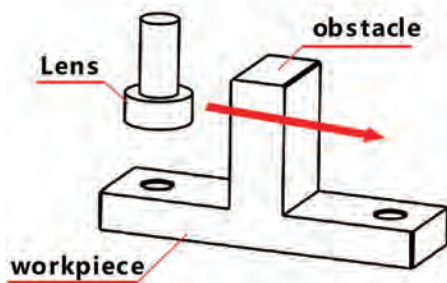
1. User program file settings: create, open, save, compile, execute and modify
2. The Find-Edge-Tool settings : Light data, Find edge parameters, Auto focus



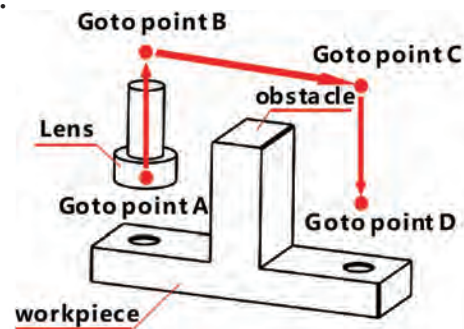
3. User program settings : Speed of running · Find Edge delay · Export to EXCEL · Go to first element · Go to specification position

4. The "Goto Point" settings :

When moving from one element to the next element, the default movement trajectory is the shortest straight line between these two elements. The collision must occur if there is an obstacle between these two elements. So the Goto points must be set on the movement trajectory to avoid the collision. As shown below:



Error: There are no Goto points



Correct: The Goto points have been inserted

5. Parameter settings :

