

METROLOGY®

Micrometer Standard Bar



Go & No Go gauge



Ring Gauge



Pin gauge (Sets)

■ Angle Block

For angle standard, checking angle of parts, calibrating universal bevel protractors and all other measuring gages.



Model No.	Specification.(mm)	Step(mm)	Quantity
AB-9036	15° 1' ; 15° 2'.....15° 9'	1'	9
	15° 10' ; 15° 20'...15° 50'	10'	5
	10° 11'20°	1°	11
	30° ;40°70°	10°	5
	10° 0' 30"		1
	45°		1
	80° -80° -100° -99°		1
	89° 10' - 89° 20' - 90° 50' - 90° 40'		1
	89° 30' - 89° 40' - 90° 30' - 90° 20'		1
	90° - 90° - 90° - 90°		1
Accuracy : ±10" Material : Hardened Steel Hardness : HRC 58-62			



AB-9036

■ Pin gauge (Sets)

Application of pin gauge

It can measure the diameter of the inner hole · width of the groove · distance and position of the hole center, measurement of inclination angle of the inside and outside, application measurement of the thread and gear.



PG-9010N



PG-9040N

Material : Bearing steel hardness : HRC 58-62 Step : 0.01mm

Model No.	Measuring Range	pcs/set	Accuracy	Model No.	Measuring Range	pcs/set	Accuracy
PG-9001N	0.2-0.5mm	31	±0.003mm	PG-9021N	10.01-10.50mm	50	±0.004mm
PG-9002N	0.51-1.00mm	50		PG-9022N	10.51-11.00mm		
PG-9003N	1.01-1.50mm			PG-9023N	11.01-11.50mm		
PG-9004N	1.51-2.00mm			PG-9024N	11.51-12.00mm		
PG-9005N	2.01-2.50mm			PG-9025N	12.01-12.50mm		
PG-9006N	2.51-3.00mm			PG-9026N	12.51-13.00mm		
PG-9007N	3.01-3.50mm			PG-9027N	13.01-13.50mm		
PG-9008N	3.51-4.00mm			PG-9028N	13.51-14.00mm		
PG-9009N	4.01-4.50mm			PG-9029N	14.01-14.50mm		
PG-9010N	4.51-5.00mm			PG-9030N	14.51-15.00mm		
PG-9011N	5.01-5.50mm			PG-9031N	15.01-15.50mm		
PG-9012N	5.51-6.00mm			PG-9032N	15.51-16.00mm		
PG-9013N	6.01-6.50mm			PG-9033N	16.01-16.50mm		
PG-9014N	6.51-7.00mm			PG-9034N	16.51-17.00mm		
PG-9015N	7.01-7.50mm			PG-9035N	17.01-17.50mm		
PG-9016N	7.51-8.00mm			PG-9036N	17.51-18.00mm		
PG-9017N	8.01-8.50mm			PG-9037N	18.01-18.50mm		
PG-9018N	8.51-9.00mm			PG-9038N	18.51-19.00mm		
PG-9019N	9.01-9.50mm			PG-9039N	19.01-19.50mm		
PG-9020N	9.51-10.00mm			PG-9040N	19.51-20.00mm		

*With plastic & wooden case (0.2~6.0mm)

*With wooden case (Over 6.0mm)

*Custom sizes and accuracy requirements available

*Calibration report (Additional charge)

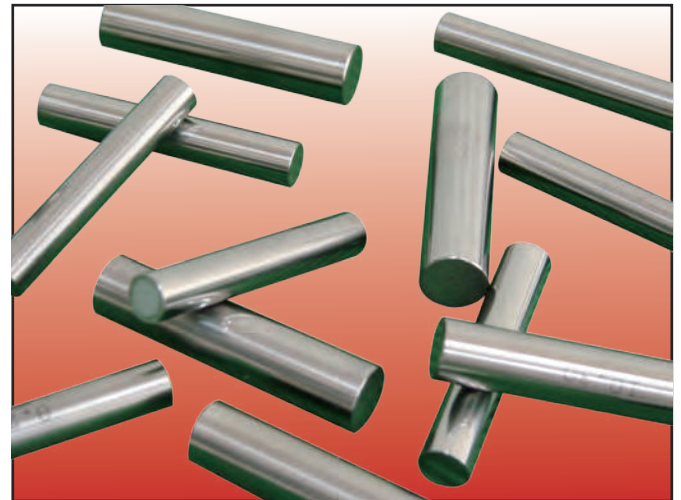
Application of pin gauge

It can measure the diameter of the inner hole · width of the groove · distance and position of the hole center, measurement of inclination angle of the inside and outside, application measurement of the thread and gear.

■ Pin Gauge (Individual)

Model No.	Range (mm)	Step (mm)
IPG-0.10-0.20	0.10-0.20	0.01
IPG-0.21-0.50	0.21-0.50	
IPG-0.51-1.00	0.51-1.00	
IPG-1.01-6.00	1.01-6.00	
IPG-6.01-10.00	6.01-10.00	
IPG-10.01-13.00	10.01-13.00	
IPG-13.01-15.00	13.01-15.00	
IPG-15.01-20.00	15.01-20.00	

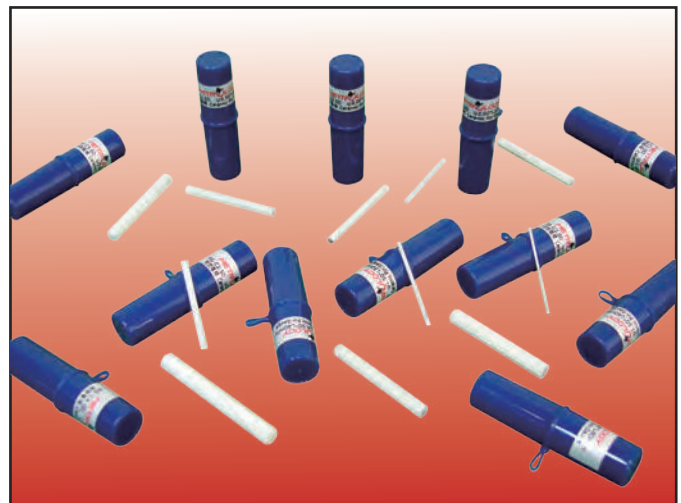
- * Each pin gauge with plastic case.
- * Custom sizes and accuracy requirements available.



■ Ceramic Pin Gauge (Individual)

Range (mm)	Length(mm)	Step (mm)	Accuracy
φ 1.00~1.99mm	32	0.01	±0.001mm
φ 2.00~2.99mm	32		
φ 3.00~3.99mm	40		
φ 4.00~4.99mm	40		
φ 5.00~5.99mm	40		
φ 6.00~6.99mm	50		
φ 7.00~7.99mm	50		
φ 8.00~8.99mm	50		
φ 9.00~10.00mm	50		

- * Each pin gauge with plastic case.
- * Custom sizes and accuracy requirements available.



■ Go & No Go gauge

Material: Bearing steel, alloy steel, tool steel, tungsten carbide, requirements available.

Specifications: custom size, style, material, hardness, accuracy requirements available.



Order specs diagram



Order example

Size : 20mm Tolerance : $\begin{matrix} -0.02 \\ +0.02 \end{matrix}$ mm Accuracy : ±0.003mm Material : SKD11 Hardness : HRC60

Application of pin gauge

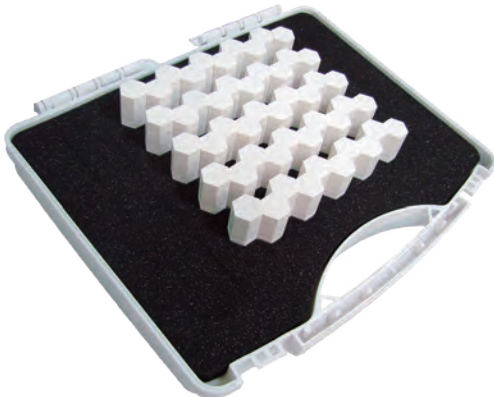
It can measure the diameter of the inner hole · width of the groove · distance and position of the hole center, measurement of inclination angle of the inside and outside, application measurement of the thread and gear.

■ Hi-Accuracy Pin gauge (Sets)



*Size Tolerance : $\pm 0.001\text{mm}$ *Surface Roughness Ra : $0.2\mu\text{m}$

*Roundness : $0.8\mu\text{m}$ *Straightness : $1.5\mu\text{m}(2\sim 10\text{mm})$ *Step : 0.01mm



Material : Tool steel hardness : HRC 58-62

Model No.	Range (mm)	Pcs/Set	Length (mm)
PG-9000H	0.10-0.20	11	40
PG-9001H	0.21-0.50	30	
PG-9002H	0.51-1.00	50	
PG-9003H	1.01-1.50		
PG-9004H	1.51-2.00		
PG-9005H	2.01-2.50		
PG-9006H	2.51-3.00		
PG-9007H	3.01-3.50		
PG-9008H	3.51-4.00		
PG-9009H	4.01-4.50		
PG-9010H	4.51-5.00		
PG-9011H	5.01-5.50		50
PG-9012H	5.51-6.00		
PG-9013H	6.01-6.50		
PG-9014H	6.51-7.00		
PG-9015H	7.01-7.50		
PG-9016H	7.51-8.00		
PG-9017H	8.01-8.50		
PG-9018H	8.51-9.00		
PG-9019H	9.01-9.50		
PG-9020H	9.51-10.00		

Material : Carbide steel hardness : HRC 78

Model No.	Range (mm)	Pcs/Set	Length (mm)
PG-9000T	0.10-0.20	11	40
PG-9001T	0.21-0.50	30	
PG-9002T	0.51-1.00	50	
PG-9003T	1.01-1.50		
PG-9004T	1.51-2.00		
PG-9005T	2.01-2.50		
PG-9006T	2.51-3.00		
PG-9007T	3.01-3.50		
PG-9008T	3.51-4.00		
PG-9009T	4.01-4.50		
PG-9010T	4.51-5.00		
PG-9011T	5.01-5.50		50
PG-9012T	5.51-6.00		
PG-9013T	6.01-6.50		
PG-9014T	6.51-7.00		
PG-9015T	7.01-7.50		
PG-9016T	7.51-8.00		
PG-9017T	8.01-8.50		
PG-9018T	8.51-9.00		
PG-9019T	9.01-9.50		
PG-9020T	9.51-10.00		

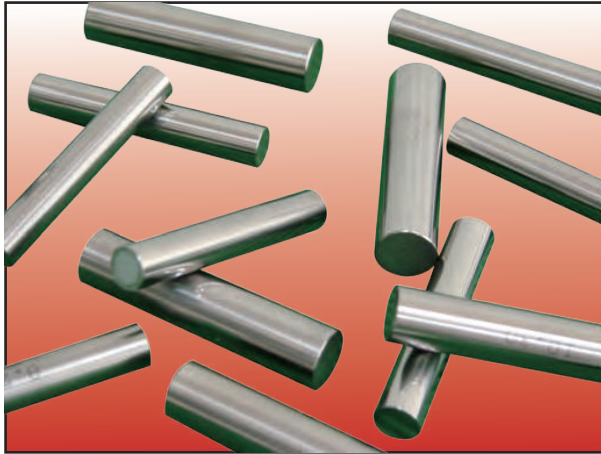
*Custom sizes and accuracy requirements available

*Calibration report (Additional charge)

*Each pin gauge with plastic case and full case

Application of pin gauge

It can measure the diameter of the inner hole · width of the groove · distance and position of the hole center, measurement of inclination angle of the inside and outside, application measurement of the thread and gear.



Application measurement of pin gauge



Inner hole position



Groove width



Dovetail slot distance



Gear pitch diameter



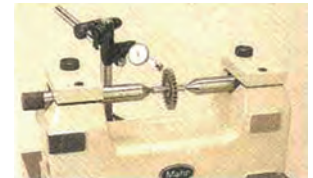
Squareness measurement standard



Angle measurement standard



Product inner diameter



Spindle reference of gear measurement

■ Hi-Accuracy Pin Gauge (Individual)

Material : Tool steel hardness : HRC 58-62

Model No.	Range (mm)	Step (mm)
IPG-0.10H-0.20H	0.10-0.20	0.01
IPG-0.21H-0.50H	0.21-0.50	
IPG-0.51H-1.00H	0.51-1.00	
IPG-1.01H-6.00H	1.01-6.00	
IPG-6.01H-10.00H	6.01-10.00	

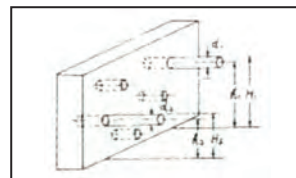
- *Each pin gauge with plastic case
- *Calibration report (Additional charge)
- *Custom sizes and accuracy requirements available

■ Hi-Accuracy Pin Gauge (Individual)

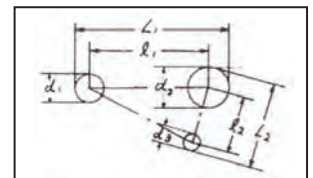
Material : Carbide steel hardness : HRC 76-80

Model No.	Range (mm)	Step (mm)
IPG-0.10T-0.20T	0.10-0.20	0.01
IPG-0.21T-0.30T	0.21-0.30	
IPG-0.31T-0.50T	0.31-0.50	
IPG-0.51T-4.00T	0.51-4.00	
IPG-4.01T-5.00T	4.01-5.00	
IPG-5.01T-6.00T	5.01-6.00	
IPG-6.01T-7.00T	6.01-7.00	
IPG-7.01T-8.00T	7.01-8.00	
IPG-8.01T-9.00T	8.01-9.00	
IPG-9.01T-10.00T	9.01-10.00	

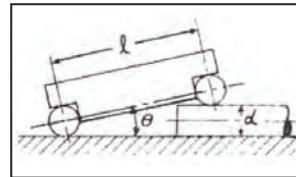
- *Each pin gauge with plastic case
- *Calibration report (Additional charge)
- *Custom sizes and accuracy requirements available



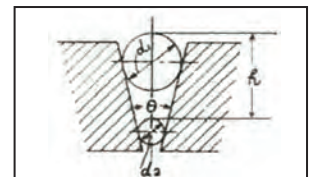
Inner hole dia. & height measurement



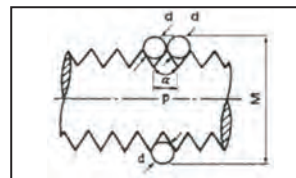
inner hole center dia. & length measurement



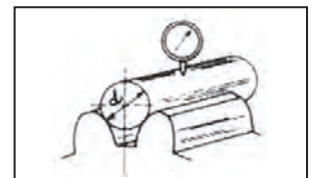
Tilt angle measurement standard



Inner taper measurement standard



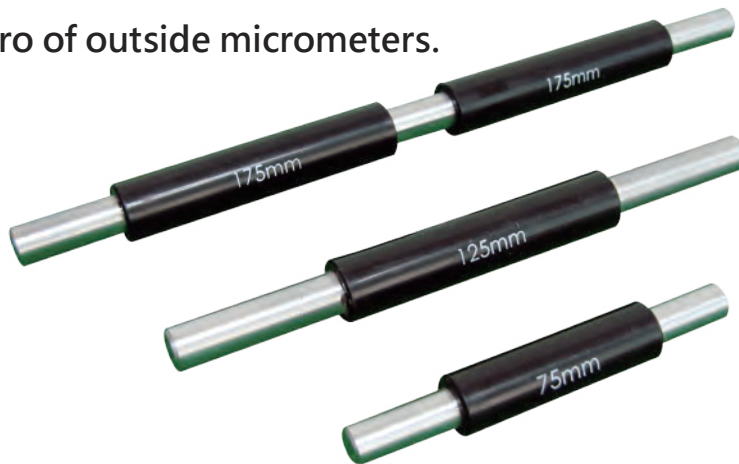
External thread pitch dia. measurement standard



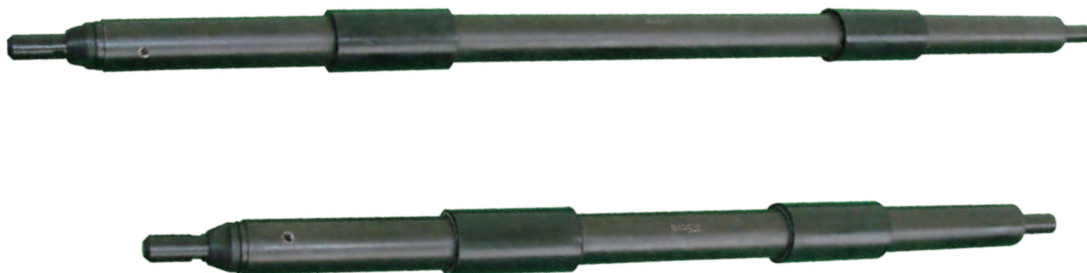
Gear runout measurement standard

■ **Micrometer Standard Bar**

For setting zero of outside micrometers.



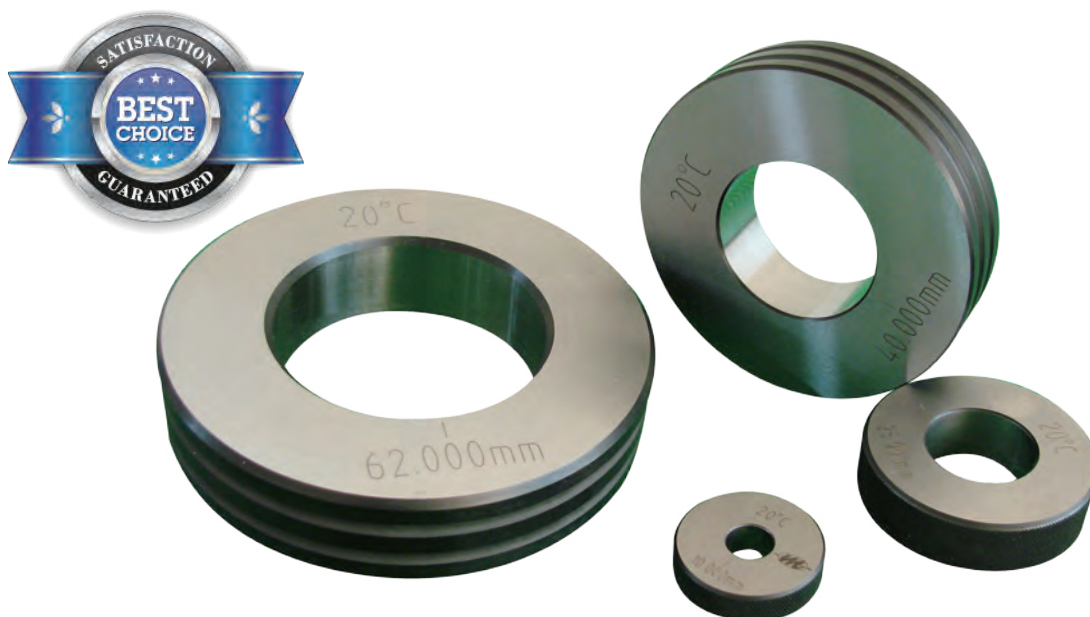
Model No.	Length(mm)	Accuracy(um)	Model No.	Length(mm)	Accuracy(um)
SB-9025	25	±2.0	SB-9175	175	±3.5
SB-9050	50	±2.0	SB-9200	200	±3.5
SB-9075	75	±2.5	SB-9225	225	±4.0
SB-9100	100	±2.5	SB-9250	250	±4.0
SB-9125	125	±3.0	SB-9275	275	±4.5
SB-9150	150	±3.0	Measuring Anvil Type : Flat		



Model No.	Length(mm)	Accuracy(um)	Model No.	Length(mm)	Accuracy(um)
SB-9300	300	±4.5	SB-9625	625	±10
SB-9325	325	±5.0	SB-9675	675	±11
SB-9350	350	±5.5	SB-9725	725	±12
SB-9375	375	±6.0	SB-9775	775	±13
SB-9400	400	±6.5	SB-9825	825	±14
SB-9425	425	±7.0	SB-9875	875	±15
SB-9450	450	±7.5	SB-9925	925	±17
SB-9475	475	±8.0	SB-9975	975	±19
SB-9500	500	±8.5	SB-91050	1050	±20
SB-9525	525	±9.0	SB-91150	1150	±22
SB-9575	575	±9.5	Measuring Anvil Type : Spherical		

■ Ring Gauge

For zero setting and accuracy inspections of calipers, inside micrometers, snap gauge, 3 point inside micrometers, bore gauges, and measuring equipment.



Accuracy : According to DIN 2250 standards

Material : Hardened steel Hardness HRC 58-62

Roundness & Cylindricity : 0.001mm(2-50mm) 0.002mm(50-100mm)
0.003mm(100-200mm) 0.004mm(200-300mm)

Model No.	Range(mm)	Tolerance(size)
RG-2~4	Φ2~4	±2um
RG-4~5	Φ4~5	±2um
RG-6~10	Φ6~10	±2um
RG-11~20	Φ11~20	±2um
RG-21~30	Φ20~30	±3um
RG-31~40	Φ31~40	±3um
RG-41~50	Φ41~50	±3um
RG-51~60	Φ51~60	±4um
RG-61~70	Φ61~70	±4um
RG-71~80	Φ71~80	±4um
RG-81~90	Φ81~90	±4um
RG-91~100	Φ91~100	±4um
RG-101~110	Φ101~110	±5um

Model No.	Range(mm)	Tolerance(size)
RG-111~120	Φ111~120	±5um
RG-121~130	Φ121~130	±5um
RG-131~140	Φ131~140	±5um
RG-141~150	Φ141~150	±5um
RG-151~160	Φ151~160	±6um
RG-161~170	Φ161~170	±6um
RG-171~180	Φ171~180	±6um
RG-181~190	Φ181~190	±6um
RG-191~200	Φ191~200	±6um
RG-201~225	Φ201~225	±7um
RG-226~250	Φ226~250	±7um
RG-251~275	Φ251~275	±7um
RG-276~300	Φ276~300	±7um

* Requirement of specific size, material, type and accuracy provided by custom order

* With the calibration report of JCC (ISO / IEC 17025)